



# *U-COM 3*

## User manual



# SUMMARY

## **1. ABOUT** **3**

1.1 Product details..... 3

1.2 Package contents ..... 3

## **2. HOW TO INSTALL** **4**

2.1 Install main unit ..... 4

## **3. GETTING STARTED** **5**

## **4. PAIRING WITH OTHER BLUETOOTH® DEVICES** **5**

4.1 Pairing with Mobile phone / TFT systems ..... 5

4.2 Second mobile phone pairing ..... 6

4.3 GPS Pairing ..... 6

4.4 Advanced Selective Pairing: Hands-Free or A2DP Stereo ..... 6

4.4.1 Phone Selective Pairing - Hands-Free Profile ..... 6

4.4.2 Media Selective Pairing - A2DP Profile ..... 6

## **5. MOBILE PHONE USAGE** **7**

5.1 Making and Answering Calls ..... 7

5.2 Siri and Google Assistant..... 7

5.3 Speed Dialing ..... 7

5.3.1 Using preset speed dial numbers..... 7

## **6. MUSIC** **8**

6.1 Playing Music with Bluetooth® Devices ..... 8

6.2 Music sharing ..... 8

## **7. BLUETOOTH® INTERCOM** **8**

7.1 Intercom pairing ..... 8

7.2 Two-way Intercom Conversation ..... 9

7.3 Old Interphone Series ..... 10

7.4 Anycom ..... 10

## **8. FUNCTION PRIORITY AND FIRMWARE UPGRADES** **10**

8.1 Function Priority ..... 10

8.2 Firmware Upgrades ..... 10

## **9. CONFIGURATION SETTING** **11**

9.1 Headset Configuration Setting ..... 11

9.1.1 Delete all pairings..... 11

9.2 Device settings ..... 11

9.2.1 Speed dial..... 11

9.2.2 Unit Language ..... 11

9.2.3 Audio Equalizer (Default: Off) ..... 11

9.2.4 VOX Phone (Default: Enable) ..... 11

9.2.5 VOX Intercom (Default: Disable) ..... 12

9.2.6 Bluetooth® Intercom Audio Multitasking (Default: Disabled) ..... 12

9.2.7 Audio Source Priority (Default: Intercom)..... 12

9.2.8 HD Intercom (Default: Enable) ..... 12

9.2.9 HD Voice (Default: Enable)..... 12

9.2.10 Voice Prompt (Default: Enable)..... 12

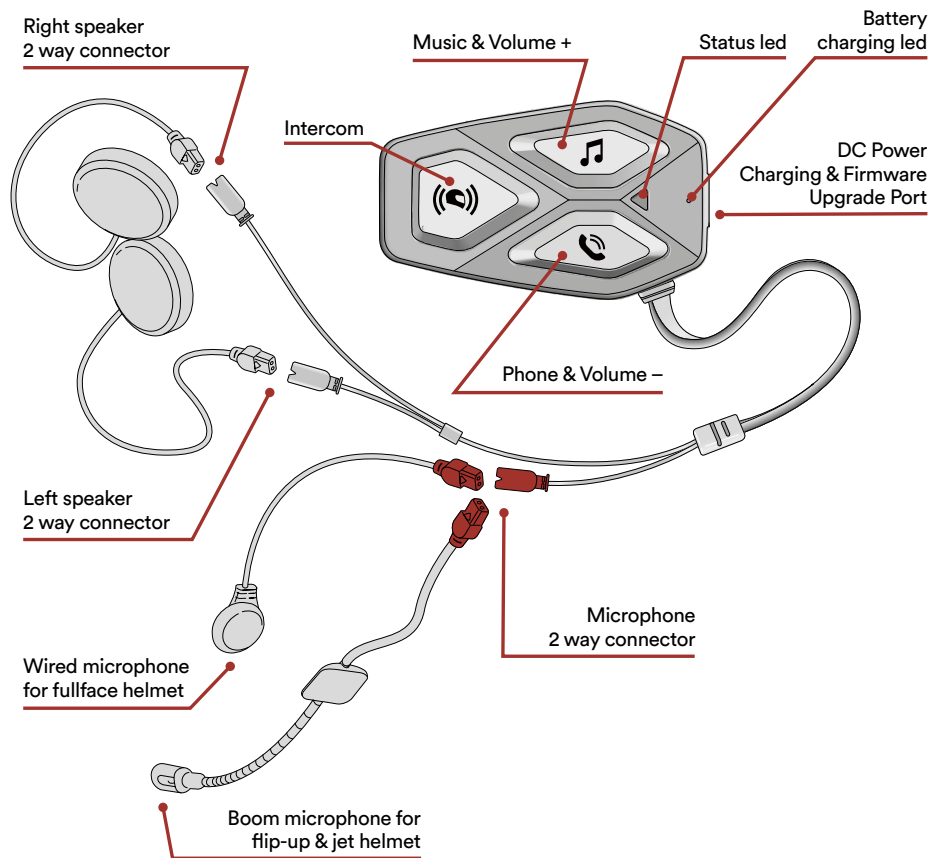
## **10. TROUBLESHOOTING** **13**

10.1 Fault reset..... 13

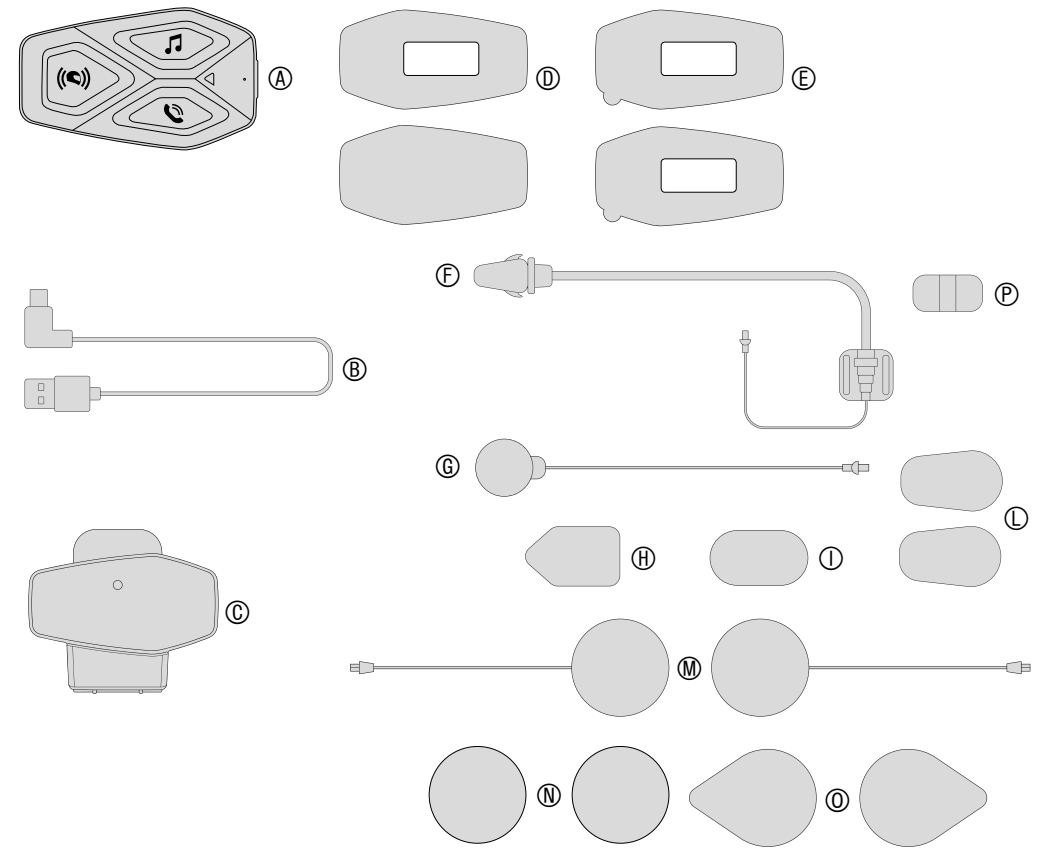
10.2 Factory reset..... 13

# 1. ABOUT

## 1.1 Product details



## 1.2 Package contents

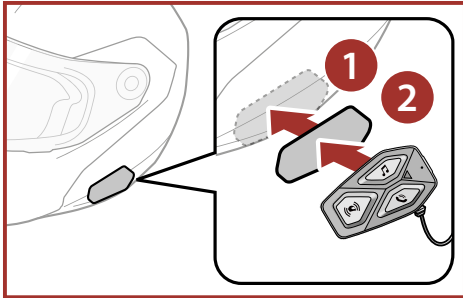


- A) Main unit
- B) Data/charge cable usb type C
- C) Main unit bracket
- D) Main unit Velcro
- E) Main unit adhesive
- F) Boom microphone
- G) Wired microphone
- H) Boom microphone Velcro
- I) Wired microphone Velcro a
- L) Boom microphone foam cover
- M) Speakers
- N) Spacers for speakers
- O) Speakers Velcro
- P) Boom microphone holder

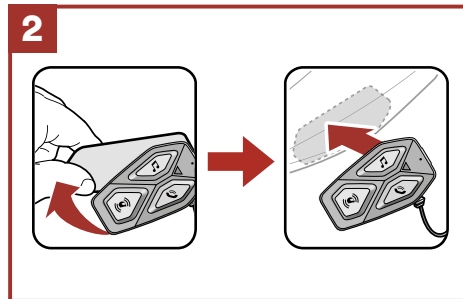
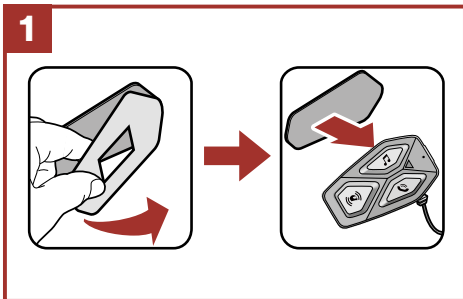
## 2. HOW TO INSTALL

### 2.1 Install main unit

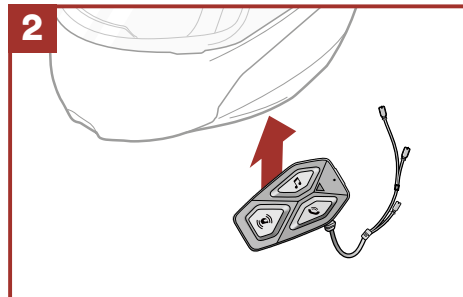
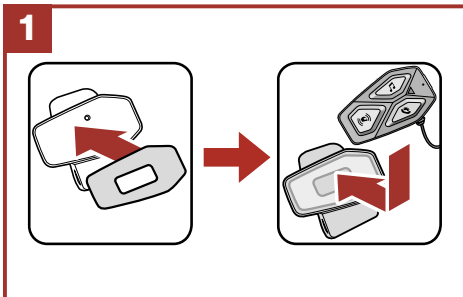
Using the hook and loop fasteners for main unit



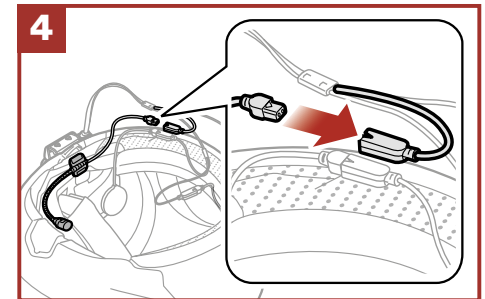
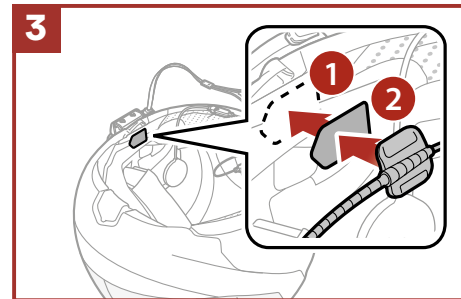
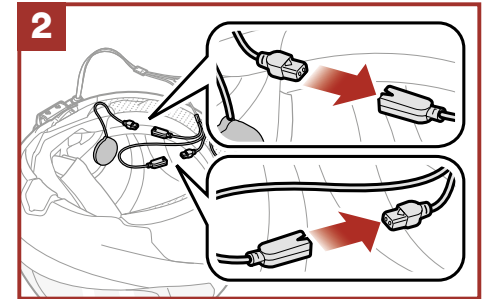
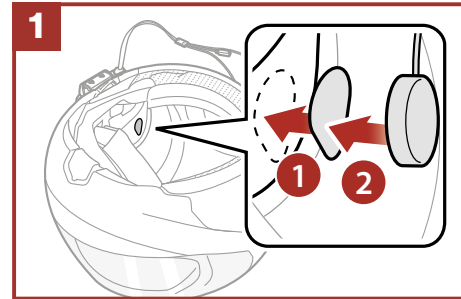
Using the double sided adhesive tapes for main unit



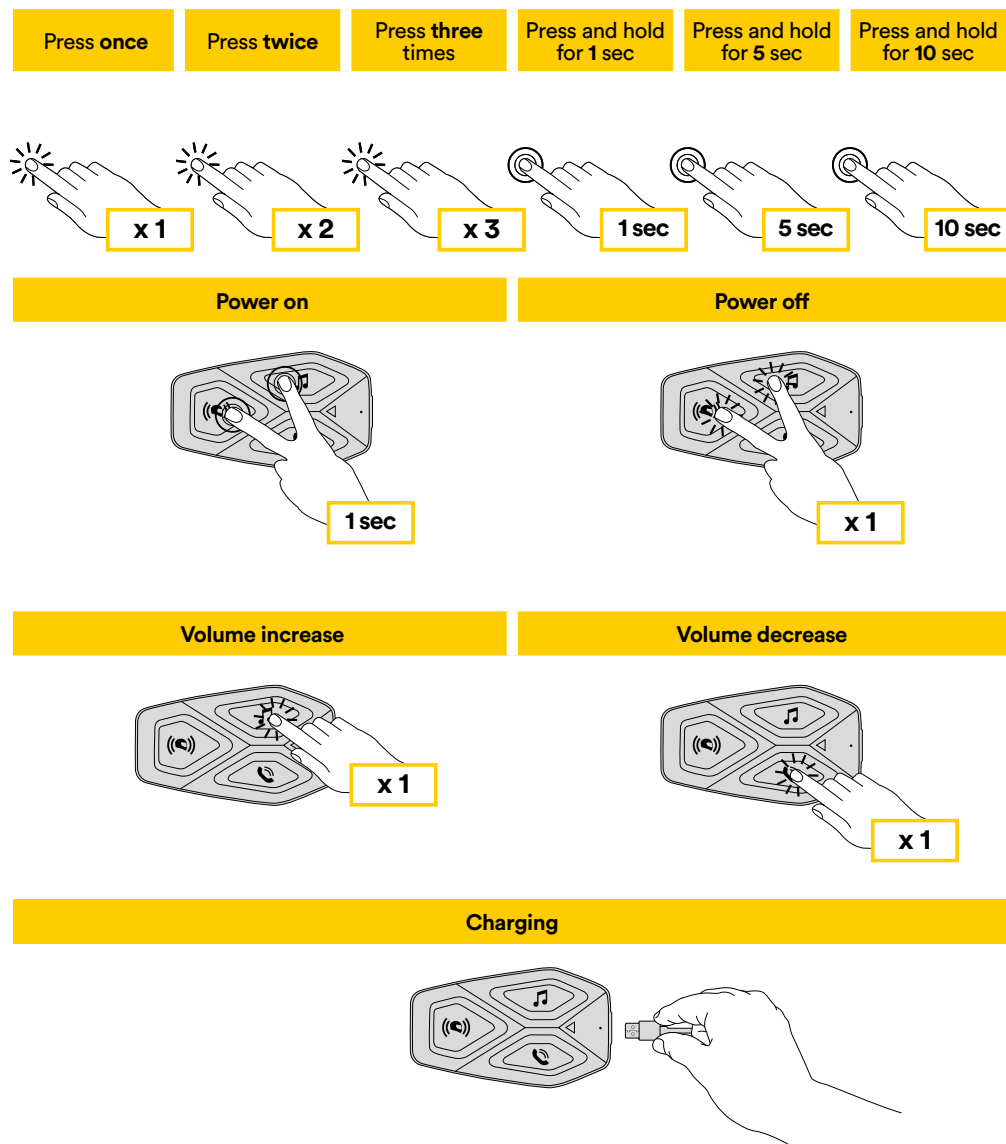
Using the clamp for main unit



Installing the speakers and the microphone



### 3. GETTING STARTED



**Note:**

- U-COM 3 use a fast charging technology, via USB-C connector. Charging for 30 minutes will give 6h of intercom talking.
- Any USB charger with FCC, CE, IC or any local approval can be used.
- U-COM 3 is compatible only with USB device with 5V DC input.

### 4. PAIRING WITH OTHER BLUETOOTH® DEVICES

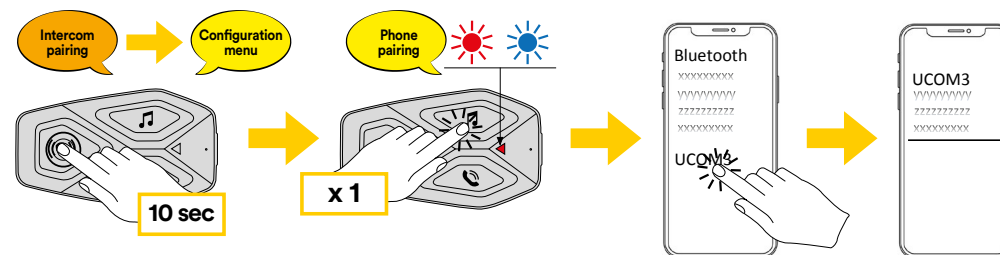
When using the headset with other Bluetooth® devices for the first time, they will need to be “paired.” This enables them to recognize and communicate with one another whenever they are within range.

U-COM 3 can be paired to another one U-COM units.

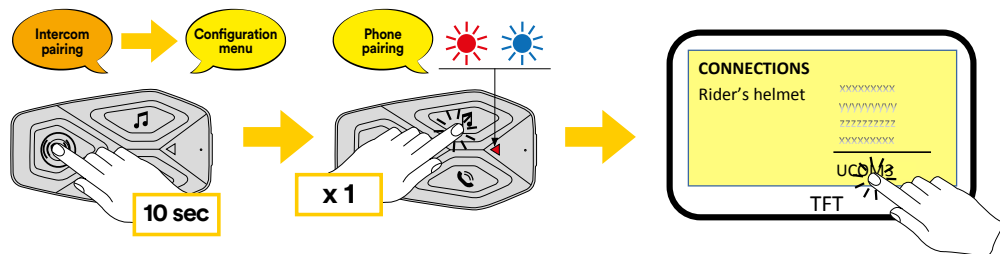
U-COM 3 can be paired to Bluetooth® devices such as mobile phones, GPS Satnav and TFT motorcycle multimedia systems.

#### 4.1 Pairing with Mobile phone / TFT systems

1. Switch on Bluetooth® service on your phone (check device manual for more details).
2. With U-COM 3 on, press and hold central button for 10 seconds, to enter settings menu. Don't release the button until the led light is blue.
3. Press once MUSIC button to start phone pairing mode.
4. On your phone search for new Bluetooth® devices.
5. In few moments the phone will list “U-COM 3 vx.x” among available devices to pair. Select this item.
6. If prompted for a PIN or code, enter 0000 (four times zero ).
7. U-COM Voice guide will confirm the successful pairing.
8. If your smartphone asks for additional authorization please confirm.



Multimedia TFT system of motorcycle must be paired with “PHONE PAIRING”:



**Note:** There is an alternative way, to pair only the first phone (main telephone). With the control unit off, press and hold at the same time the MUSIC key together with the CENTRAL key, until the red / blue LED flashes.

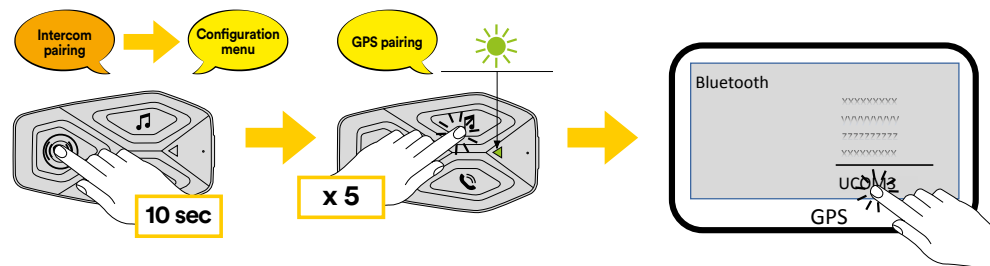
The primary phone will have priority over the second phone, in case of simultaneous call reception on both phones.

## 4.2 Second mobile phone pairing

1. Switch on Bluetooth® service on your phone (check device manual for more details).
2. With U-COM 3 on, press and hold central button for 10 seconds, to enter settings menu. Don't release the button until the led light is blue.
3. Press the MUSIC button twice to activate Second mobile phone pairing mode.
4. Start the search for new Bluetooth® devices on the mobile phone.
5. In few moments the phone will list “U-COM 3 vx.x” among available devices to pair. Select this item.
6. If prompted for a PIN or code, enter 0000 (four times zero ).
7. UCOM Voice guide will confirm the successful pairing.
8. If your smartphone asks for additional authorization please confirm.

## 4.3 GPS Pairing

1. Switch on Bluetooth® service on your GPS (check device manual for more details).
2. With U-COM 3 on, press and hold central button for 10 seconds, to enter settings menu. Don't release the button until the led light is blue.
3. Press the MUSIC button 5 times to activate GPS pairing mode.
4. Start the search for new Bluetooth® devices on the GPS.
5. In few moments the device will list “U-COM 3 vx.x” among available devices to pair. Select this item.
6. If prompted for a PIN or code, enter 0000 (four times zero).
7. UCOM Voice guide will confirm the successful pairing.
8. If your device asks for additional authorization please confirm.



## 4.4 Advanced Selective Pairing: Hands-Free or A2DP Stereo

Phone Pairing allows the headset to establish two Bluetooth® profiles: Hands-Free or A2DP Stereo. Advanced Selective Pairing allows the headset to separate the profiles to enable connection with two devices.

### 4.4.1 Phone Selective Pairing - Hands-Free Profile

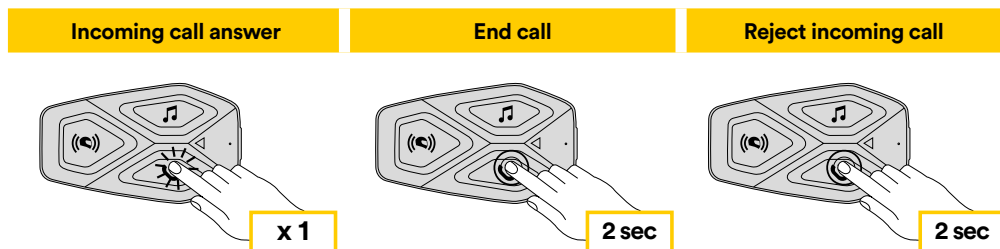
Execute Phone Selective Pairing in the Configuration Menu.

### 4.4.2 Media Selective Pairing - A2DP Profile

Execute Media Selective Pairing in the Configuration Menu.

## 5. MOBILE PHONE USAGE

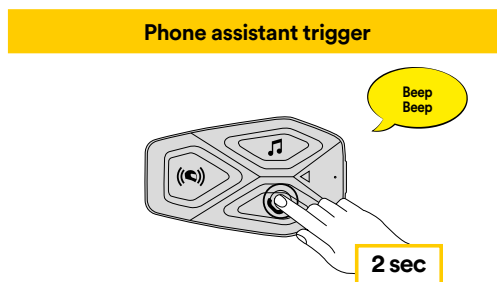
### 5.1 Making and Answering Calls



**Note:** If you have a GPS device connected, you will not hear its voice navigations during a phone call.

### 5.2 Siri and Google Assistant

U-COM 3 supports the Siri and Google Assistant access directly by pressing the PHONE button for two seconds.

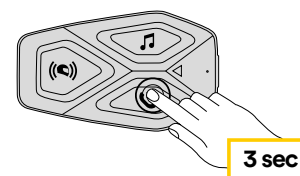


### 5.3 Speed Dialing

It is possible to store up to 3 telephone numbers (if “advanced mode” is active) to be used as speed dials. You can set the speed dial numbers via UNITE APP or INTERPHONE Device Manager.

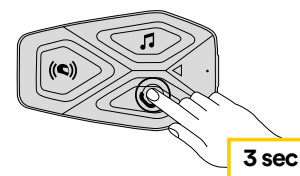
#### 5.3.1 Using preset speed dial numbers

How to activate speed dial (with ADVANCED FEATURES off)



How to activate speed dial (with ADVANCED FEATURES on)

1. Enter into the Speed Dial menu.



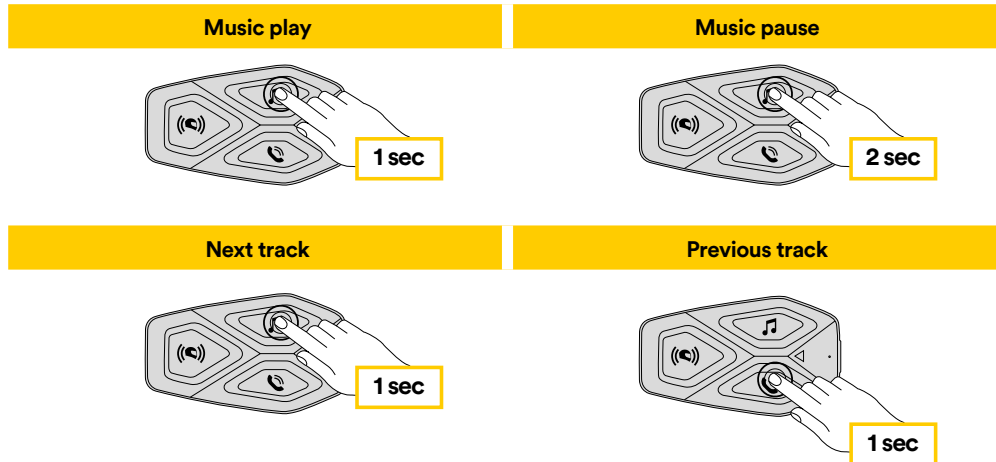
2. Navigate between the Speed Dial Preset with MUSIC and PHONE buttons, as indicated in picture here below. Select the wanted feature with CENTRAL button.

Select one function	Confirm selected funcion					
<p>Last number redial Speed dial #1 Speed dial #2 ...</p>	<table border="1"><tr><td>Last number redial</td></tr><tr><td>Speed dial #1</td></tr><tr><td>Speed dial #2</td></tr><tr><td>Speed dial #3</td></tr><tr><td>Cancel (exit from menu)</td></tr></table>	Last number redial	Speed dial #1	Speed dial #2	Speed dial #3	Cancel (exit from menu)
Last number redial						
Speed dial #1						
Speed dial #2						
Speed dial #3						
Cancel (exit from menu)						

## 6. MUSIC

### 6.1 Playing Music with Bluetooth® Devices

Interphone U-COM 3 can play music from Bluetooth® devices (smartphones, MP3 players, Motorcycle TFTs etc ...) equipped with the A2DP profile. To play music you need to pair these devices to INTERPHONE U-COM 3.



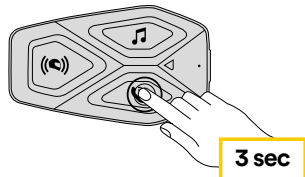
### 6.2 Music sharing

You can start sharing the music received from your phone with another U-COM control unit, during a two-way intercom conversation.

Both control units can control the playback of music, eg example go to the next track or the previous track.

**Note:** music sharing cannot be activated at the same time as an intercom conversation.

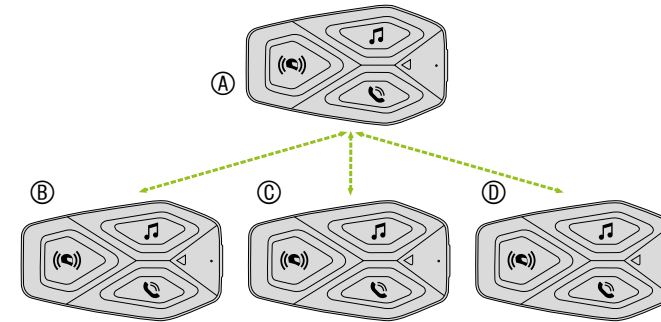
To start / stop sharing music, activate first the intercom conversation, then press the PHONE button for 3 seconds.



## 7. BLUETOOTH® INTERCOM

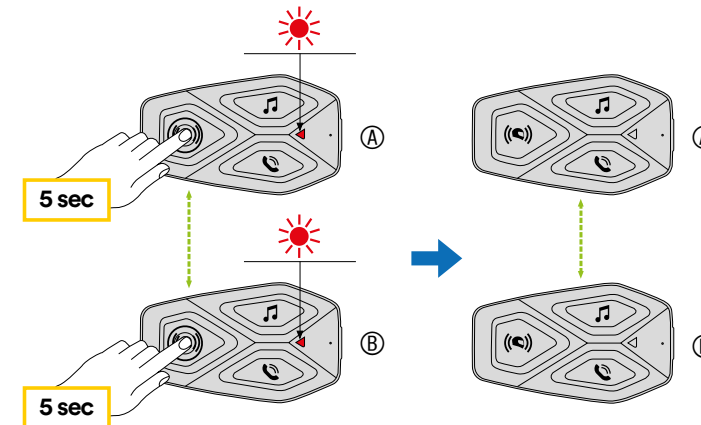
### 7.1 Intercom pairing

U-COM 3 can be paired with up to 3 other UCOM units (or Sena units), as shown in the following picture.



The pairing is only necessary the first time, then the control units will automatically recognize each other.

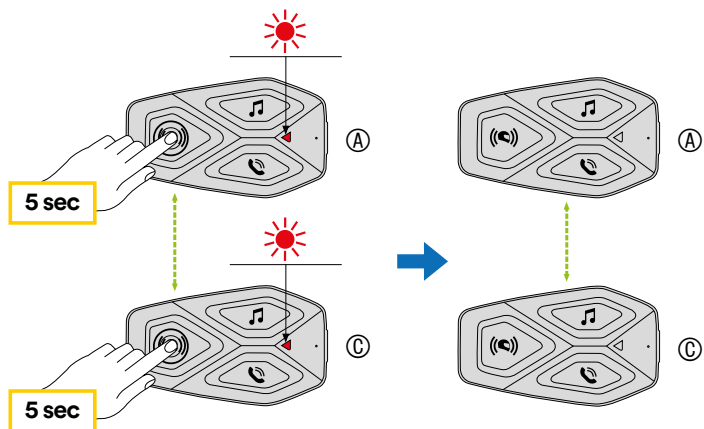
1. Press and hold the center button (intercom) on both units A and B for 5 seconds, until you hear the voice prompt "intercom pairing". The light flashing red indicates the device is now visible.



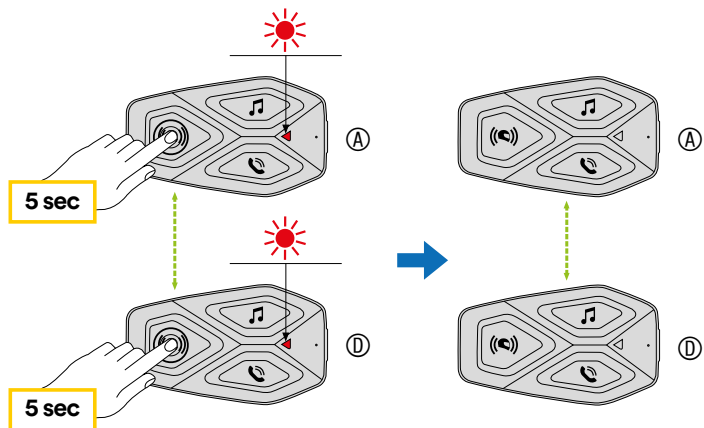
After few seconds the units will be paired and they will start the intercom communication. The light on both units will flash blue twice.



- Repeat the previous step again, pressing the center button (intercom) on the two units A and C for 5 seconds until you hear the voice prompt "Intercom pairing".



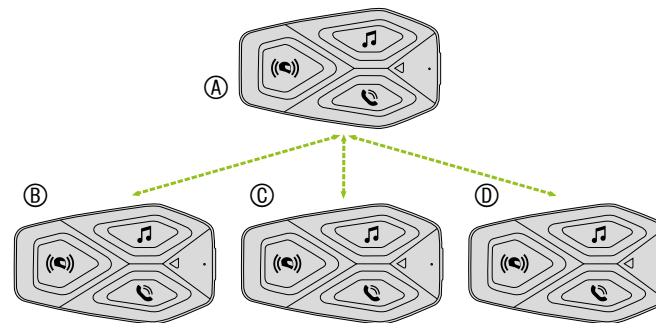
- Repeat the procedure again, pressing the centre button (intercom) of the two units A and D for 5 seconds until you hear the voice prompt "Intercom pairing".



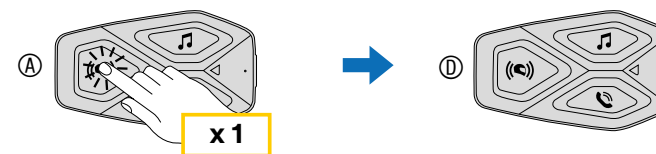
## 7.2 Two-way Intercom Conversation

After pairing the control units, communication can be started, by pressing the INTERCOM button (center button), according to the diagram below.

- Press once to connect the control unit D.

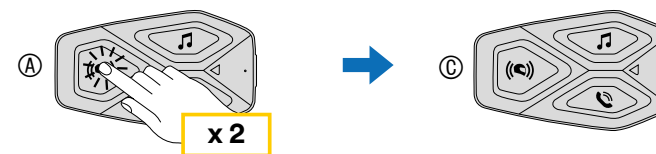


Start/stop intercom connection with unit "D"



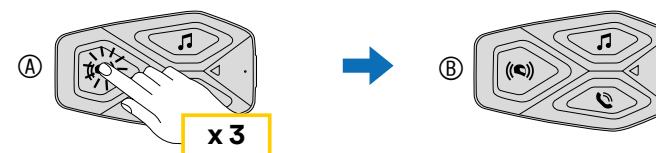
- Press twice to connect the control unit C.

Start/stop intercom connection with unit "C"



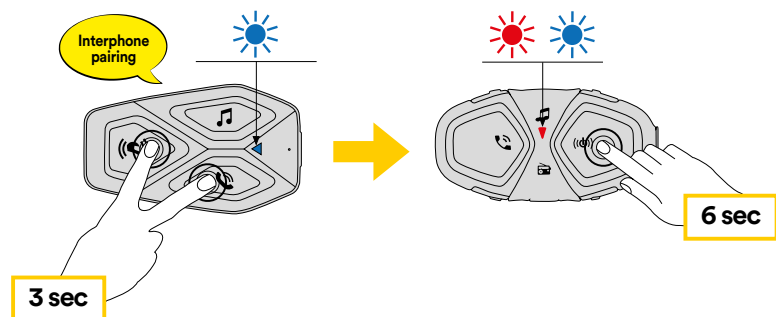
- Press three times to connect the control unit B.

Start/stop intercom connection with unit "B"



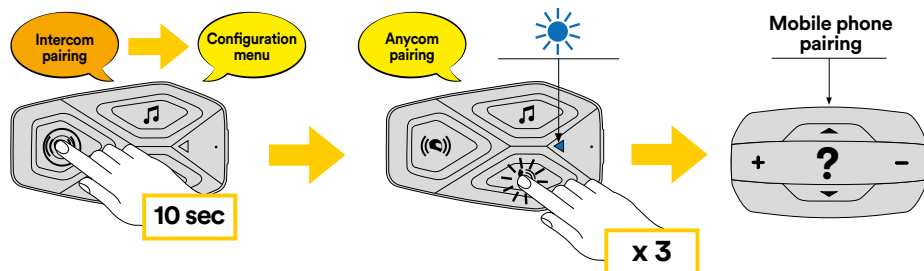
## 7.3 Old Interphone Series

It is possible to pair previous Interphone series devices by pressing, with the unit on, the INTERCOM and TELEPHONE buttons for 5 seconds. Then start pairing mode on the second unit, usually pressing the power button (with the control unit off) until the led flashes red/blue.



## 7.4 Anycom

Anycom feature allows intercom conversations with other intercom brands. It is possible to pair the intercom with only one non-Interphone device at a time. The intercom distance depends on the performance of the connected Bluetooth® intercom. When a not-Interphone device is paired with the Interphone device, if another Bluetooth® device is paired via the second mobile phone pairing, it will be disconnected.



1. With U-COM 3 on, enter the configuration menu by pressing the central button for 10 seconds. Do not to release the button before the led turns blue.
2. Press the PHONE button 3 times to activate the ANYCOM pairing mode.
3. Set the not-Interphone intercom to mode Phone pairing.

## 8. FUNCTION PRIORITY AND FIRMWARE UPGRADES

### 8.1 Function Priority

Intercom prioritizes connected devices in the following order:

1. (highest) Phone
2. Bluetooth® Intercom
3. (lowest) Bluetooth® stereo music

A low priority function will be interrupted by a higher priority function. For example, stereo music will be interrupted by an intercom conversation; an intercom conversation will be interrupted by an incoming cell phone call.

You can reverse the priority of Intercom and Music, via APP smartphone or device manager for PC/MAC.

### 8.2 Firmware Upgrades

The headset supports firmware upgrades. Using the Device Manager utility (available for PC and MAC on [www.interphone.com](http://www.interphone.com)) you can upgrade firmware.

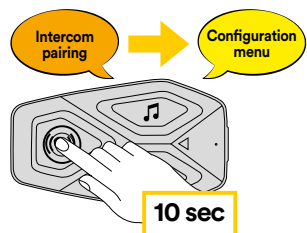
The USB Power & Data Cable (USB-C) must be connected to your computer, then start Device Manager on computer and follow instructions step by step.

Interphone Unite APP can check the firmware version present on the headset and inform you in case of a newer available firmware, but APP can't flash the new firmware to headset.

## 9. CONFIGURATION SETTING

### 9.1 Headset Configuration Setting

With U-COM 3 on, press and hold central button for 10 seconds, to enter settings menu. Don't release the button until the led light is blue.



To navigate through the settings, press once the MUSIC button or the PHONE button.

1. Phone pairing
2. Second Mobile Phone Pairing
3. Phone selective pairing (pair a device with HFP profile only)
4. Media selective pairing (pair a device with the A2DP profile only)
5. GPS pairing

To confirm the following configuration menu options, press the CENTER button once.

6. Delete all pairings
7. Anycom pairing
8. Factory reset
9. Exit

#### 9.1.1 Delete all pairings

Delete all Bluetooth® pairings stored in the device.

### 9.2 Device settings

You can change the device settings from the Device Manager utility (available for PC and MAC on [www.interphone.com](http://www.interphone.com)) or from the Interphone UNITE app.

Attention: the setting “Advanced Features” will enable the following headset features:

- Phone multiple speed dial

#### 9.2.1 Speed dial

Assign phone numbers for speed dialing to make a phone call quickly.

#### 9.2.2 Unit Language

You can select the device language. The selected language is maintained even when the headset is rebooted

#### 9.2.3 Audio Equalizer (Default: Off)

You can use the Audio Equalizer to increase/decrease the decibel level of different frequency ranges of audio.

- Balance will adjust all of the frequency ranges to be the same volume level (0 dB).
- Bass Boost will increase the bass range of audio (20 Hz - 250 Hz).
- Mid Boost will increase the mid range of audio (250 Hz - 4 kHz).
- Treble Boost will increase the high range of audio (4 kHz - 20 kHz).

#### 9.2.4 VOX Phone (Default: Enable)

If this feature is enabled, you can answer incoming calls by voice. When you hear a ringtone for an incoming call, you can answer the phone by saying a word such as “Hello” loudly or by blowing air into the microphone. VOX phone is temporarily disabled if you are connected to intercom. If this feature is disabled, you have to tap the Center Button to answer an incoming call.

## 9.2.5 VOX Intercom (Default: Disable)

If VOX Intercom is enabled, you can initiate an intercom conversation with the last connected intercom by voice. When you want to start intercom, say a word such as “Hello” loudly or blow air into the microphone. If you start an intercom conversation by voice, the intercom terminates automatically when you and your intercom friend remain silent for 20 seconds. However, if you manually start an intercom conversation by tapping the Center Button, you have to terminate the intercom conversation manually. However, if you start the intercom by voice and end it manually by tapping the Center Button, you will not be able to start intercom by voice temporarily. In this case, you have to tap the Center Button to restart the intercom. This is to prevent repeated unintentional intercom connections by strong wind noise. After rebooting the headset, you can start the intercom by voice again.

## 9.2.6 Bluetooth® Intercom Audio Multitasking (Default: Disabled)

Audio Multitasking ( Bluetooth® Intercom Audio Multitasking) allows you to have an intercom conversation while simultaneously listening to music or GPS instructions. The overlaid audio is played in the background with reduced volume whenever there is an intercom conversation and will return to normal volume once the conversation is finished.

### Note:

- For Bluetooth® Intercom Audio Multitasking to work properly, you need to power the headset off and on. Please restart the headset.
- Bluetooth® Intercom Audio Multitasking will be activated during two-way intercom conversations with a headset that also supports this feature.
- Some GPS devices may not support this feature.
- The Audio Multitasking feature can be configured through the Audio Overlay Volume Management settings.

## 9.2.7 Audio Source Priority (Default: Intercom)

Enables you to reverse the priority between the Intercom and Music function. Refer to Chapter 8.1 for details.

## 9.2.8 HD Intercom (Default: Enable)

HD Intercom enhances the two-way intercom audio from normal quality to HD quality. HD Intercom will become temporarily disabled when you enter into a multi-way intercom. If this feature is disabled, the two-way intercom audio will change to normal quality.

### Note:

- The intercom distance of HD Intercom is relatively shorter than normal intercom.
- HD Intercom will become disabled temporarily when Bluetooth® Intercom Audio Multitasking is enabled.

## 9.2.9 HD Voice (Default: Enable)

HD Voice allows you to communicate in high-definition during phone calls. This feature increases the quality so that the audio will be crisp and clear during phone call conversations.

Three-Way Conference Phone Call with Intercom Participant will not be available if HD Voice is enabled.

### Note:

- Refer to the manufacturer of your Bluetooth® device that will be connected to the headset to see if it supports HD Voice.
- HD Voice is active only when Bluetooth® Intercom Audio Multitasking is disabled.

## 9.2.10 Voice Prompt (Default: Enable)

You can disable voice prompts by software configuration settings, but the following voice prompts are always on.

- Headset configuration settings menu, battery level indicator, speed dial.

## 10. TROUBLESHOOTING

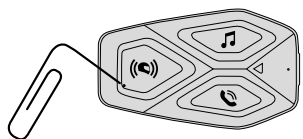
Please visit [www.interphone.com](http://www.interphone.com) for video tutorials and answers to frequently asked questions.

### 10.1 Fault reset

When the intercom is not working properly, you can reset the unit:

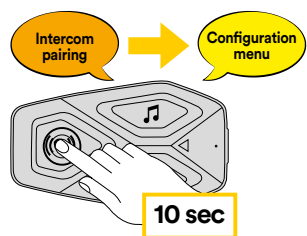
1. Locate the Reset button at the bottom left of the Intercom button.
2. Gently insert a paper clip into the hole and press down with light pressure. The headset will turn off.

**Note:** Resetting after an error will not reset the intercom to factory settings.



### 10.2 Factory reset

To erase all of your settings and start fresh, the headset can be restored to factory default settings using the Factory Reset feature.



With U-COM 3 on, enter the configuration menu by pressing the power key for 10 seconds. Be careful not to release the button before the LED turns blue, you will hear the message confirming activation of the configuration menu.

Press the PHONE button twice until you hear the message “Factory reset”, press once the CENTRAL button to confirm. A voice announcement will be issued to confirm: “Reset headphones, goodbye”.