

DEAR GIANT LOOP RIDER, You are now the proud owner of the ingenious soft luggage solution that combines the convenience of hard panniers with all of Giant Loop's performance advantages. Now you can lighten up, lose the luggage racks and enjoy a better handling, safer, faster ride. Mount your Siskiyou Panniers™ with confidence, knowing that every stitch and seam represents years of testing and development by on- and off-road riders over thousands of miles in the most demanding conditions. If mounted, packed and cared for properly, we trust that your Siskiyou Panniers will provide years of trouble-free gear hauling.

If you have any questions, please email us at [ride@giantloopmoto.com](mailto:ride@giantloopmoto.com), or call 458-206-9113.

Ride while you can,

Team Giant Loop



Giant Loop LLC

| [giantloopmoto.com](http://giantloopmoto.com)

| Designed in Bend, Oregon

| Made in U.S.A.

| Ridden Worldwide

## CARING FOR YOUR SISKIYOU PANNIERS™

- Do not overstuff or over-load Panniers. Consult your motorcycle's owner's manual and do not exceed the total gear and rider weight (Gross Vehicle Weight, GVW) limitations for your bike. Remember: Giant Loop's approach is all about going ultra-light. Pack only what you need, nothing more or less (see Packing Tips).
- Avoid exposure to insect repellants containing DEET.
- Hand wash Saddlebag with mild soap (like Simple Green), rinse with clean water and air dry. DO NOT MACHINE WASH OR DRY.
- Prevent mold, mildew and funky stench by unpacking wet gear, rinsing thoroughly with fresh water and airing dry.

## PACKING TIPS

- Do not overstuff or over-load Panniers. The challenge should be to pack as little as necessary to be safe, comfortable and self-sufficient. Go light. Go fast. Go far.
- Take care to pack the heaviest gear as low as possible, preferably below the seat line. Your bike will handle far better with weight positioned as close to the center of the bike as possible.
- Use Stuff Sacks to organize gear within the waterproof inner Pods. Pack bags within bags.
- To avoid wearing through the Panniers from vibrations, pack all sharp and/or hard items inside a protective layer. For example, create a sleeve for tire irons from a section of old inner tuber, pack tools in rolls and wrap other hard items in clothing.
- Use highly quality Rok Straps to secure Great Basin Dry Bag, tent, tarp, bivy sack, sleeping pad, rain gear and other lightweight items to top of Panniers.
- Visit our website at [GiantLoopMoto.com](http://GiantLoopMoto.com) for more tips from riders and instructions.
- For 2-up riding, affix a small seat cushion to the top of the Siskiyou Panniers.



**Please keep in touch. We want to hear about your adventures!**

Giant Loop LLC

458-206-9113

Bend, Oregon USA

[GiantLoopMoto.com](http://GiantLoopMoto.com)

[ride@giantloopmoto.com](mailto:ride@giantloopmoto.com)



# SISKIYOU PANNIERS™

## TERMS OF USE, LIMITED LIFETIME WARRANTY AND LIABILITY WAIVER

Giant Loop LLC, an Oregon company, having its principal place of business in Bend, OR ("Giant Loop") offers its motorcycle bag (the "Product") with the terms, conditions and notices as follows:

### TERMS OF USE

This Product is offered to you conditioned upon your acceptance without modification of the terms, conditions, and notices contained herein. Installation and/or use of this product implies acceptance of all such terms, conditions, and notices. If you do not agree to these terms, do not buy the Product. If you have already bought the Product and do not agree to these terms, return this Product promptly, including the packaging and all written materials, to Giant Loop.

### LIMITATION OF LIABILITY AND LIMITED LIFETIME WARRANTY DISCLAIMER

Giant Loop offers a money-back guarantee provided the Product is returned, in unused condition with original receipt, within 30 days of purchase. Giant Loop reserves the right to subtract a 15% re-stocking fee from the refund amount. Standard shipping fees will apply to exchanged items and are paid by the customer. If you receive damaged or defective goods or items that you did not order, the items must remain unopened and unused so we can credit you in full, including return shipping if it is a result of our error, mishandled shipping or manufacturers' defect.

Giant Loop provides to the original purchaser a limited lifetime warranty against defects in materials or craftsmanship if purchased directly from a Giant Loop authorized dealer. This warranty covers defective materials and craftsmanship only, and does not include damage due to normal wear and tear or misuse. Failure to comply with the included instructions for this Product will void the limited lifetime warranty. If defects in the materials or craftsmanship of the Product exist, notify Giant Loop immediately of the defect. Giant Loop will provide for repair or replacement of the Product, after Giant Loop has determined, in our sole discretion, that a defect is present. Proof of purchase is required to utilize the limited warranty provisions.

If you experience any problems with the Product within the warranty period please return the Product or contact us for prompt repair or replacement at our discretion: [ride@giantloopmoto.com](mailto:ride@giantloopmoto.com), 458-206-9113.

Excepting the warranties stated in the preceding paragraph, Giant Loop hereby disclaims all other warranties and conditions with regard to the Product including all implied warranties and conditions of merchantability and fitness for a particular purpose. There are no warranties which extend beyond the description on the face hereof. Giant Loop does not warrant against damages or defects arising out of use or installation of the Product. Installation instructions are provided for your convenience. Giant Loop is not responsible for any damages arising out of the installation, improper or otherwise, of the Product. No warranty of any kind, expressed or implied, is made regarding the safety of this Product.

To the extent allowed by law, Giant Loop shall not be held liable for any direct, indirect, punitive, incidental, special or consequential damages arising out of, or connected with, the use or misuse of this Product. Buyer assumes all risks and liability arising from use of this Product.

### ENTIRE AGREEMENT

This document states the entire obligation of Giant Loop with respect to the Product. If any part of this agreement is determined to be void, invalid, unenforceable or illegal, including, but not limited to the warranty disclaimers and liability limitations set forth above, then the remainder of the agreement shall remain in full force and effect.

### APPLICABLE LAW

This agreement is governed by the laws of Oregon, USA. You hereby consent to the exclusive jurisdiction and venue of the courts of Oregon, USA, in all disputes arising out of or relating to the use of this product.



# MOUNTING INSTRUCTIONS

*NOTE: Failure to follow recommended mounting and installation instructions voids warranty. Manufacturer is not liable for any damage, injury or death that results from improper use and installation of products. By installing these products, user accepts all liabilities, terms and conditions outlined in the Liability & Warranty statement included here.*

## Do-It-Yourself, Do-It-Once, Do-It-Right

Before mounting, carefully read through these instructions start to finish. Take special care to make certain your kit is tightly mounted on your machine and you have secured all compression straps and webbing tails before EVERY ride.

### Tools required

- Scissors for cutting hook-and-loop
- Flat-blade (standard) screwdriver for the Hot Spring Heat Shield installation.



### Siskiyou Panniers components list

- Left and right Panniers
- 2 Hot Springs Heat Shields + 2 stainless steel clamps
- 2 waterproof roll-top inner liner Pods
- 36" roll of heavy-duty hook-and-loop



## PRE-FITTING AND QUICK-MOUNTING YOUR SISKIYOU PANNIERS™

**1** Stuff your Siskiyou Panniers with sleeping bags to fill the volume and allow you to see the tailored shape. Become familiar with the bag's fit on your machine. It can be positioned differently on every machine, so look for connection locations, adequate heat protection and plenty of clearance so the Panniers do not interfere with the safe operation of your motorcycle.

**2** Lay stuffed Panniers centered across back of bike.

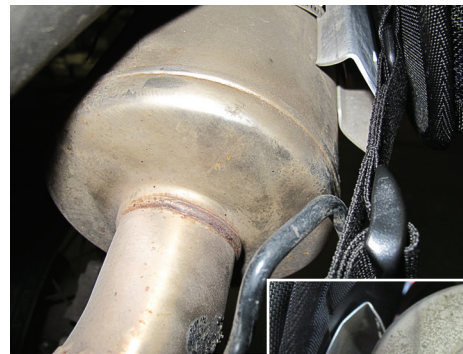


Experiment with Pannier width and positioning on bike. For easier, quicker adjustments, insert a piece of cardboard between most of the hook-and-loop material. Every make and model is slightly different, as are each rider's stature and preferences. After properly adjusting width and angle of Panniers, remove cardboard and press down to secure hook-and-loop material. Then, secure the front and rear rear webbing straps from side-to-side, looping webbing end back through the tri-glide buckle to ensure Panniers cannot become separated.



Experiment with Pannier width and positioning on bike. For easier, quicker adjustments, insert a piece of cardboard between most of the hook-and-loop material. Every make and model is slightly different, as are each rider's stature and preferences. After properly adjusting width and angle of Panniers, remove cardboard and press down to secure hook-and-loop material. Then, secure the front and rear rear webbing straps from side-to-side, looping webbing end back through the tri-glide buckle to ensure Panniers cannot become separated.

**3** Look carefully at all your potential connection positions. Verify that any passenger footrest



**4** Pay special attention to areas where the Siskiyou Panniers will need to be protected from making direct contact with any and all exhaust components by installing the included Hot Springs Heat Shields. Purchase additional Heat Shields for dual exhausts or any other exposed exhaust components.



**5** Note where Siskiyou Panniers make contact with your motorcycle's body work, plastics or other components. Protect these areas from scuffing by installing clear vinyl film on all contact surfaces.

**6** On some bikes, turn signals will have to be relocated or replaced with lower-profile lights.

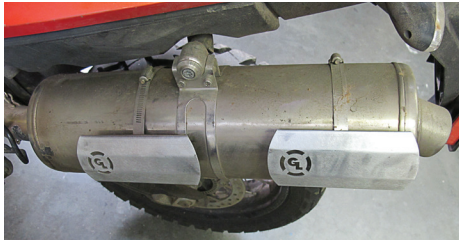
**7** Strap on the Siskiyou Panniers, starting with the rear (see 3-Point Mounting), then connecting and tightening all connections until the Saddlebag is firmly attached to your bike. Tug the bag aggressively to verify that it's on there tight. Use additional straps to stabilize the Panniers in all directions.



**8** Double check all strap connections and secure any loose webbing tails with the included elastic bands. We recommend cutting webbing to length, if possible (however this will limit your ability to move the Panniers from one bike to another).



# PREVENT MELTDOWN WITH HOT SPRINGS HEAT SHIELDS



## THE UGLY

Read these instructions carefully, from start to finish, to avoid DESTROYING your side panels, bags, stuff inside your bags, etc. Giant Loop provides 2 Hot Springs Heat Shields. Use them! And order additional Heat Shields, if required to prevent any and all parts of your Siskiyou Panniers from making direct contact with exhaust components and turning into puddles of molten black goo. Oooooo, that's UGLY!

## THE BAD

Modern motorcycle exhaust systems can produce incredibly high temperatures! At these temperatures, few materials can withstand DIRECT CONTACT (touching) without breaking down.

## THE GOOD

Even a fraction of an inch of air flow is sufficient to prevent damage to side panels, luggage and other materials.

The Hot Springs Heat Shield by Giant Loop is the simple, inexpensive, universal heat problem-solver for virtually any motorcycle exhaust system. By properly installing one or more Hot Springs Heat Shields, you can enjoy years of trouble-free riding in even the most extreme conditions.

Position clamp screw on back side of exhaust and tighten until snug. Trim excess hose clamp for a tidy look.

Position Hot Spring Heat Shield between side panel plastic and exhaust. On some motorcycles, the shield may be positioned partially beneath the side panel and partially beyond it to keep the saddlebag from touching the exhaust.

Air will pass through the correctly installed Heat Shields and no melting will occur.

Dual exhaust motorcycles require additional Heat Shields to protect both sides.

## PROTECT BODYWORK & PLASTICS WITH VINYL FILM

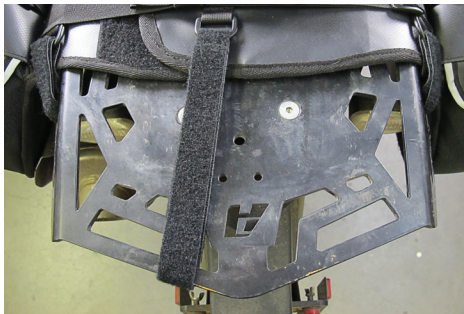


**STOP!** Prevent scuffing or marks on your body work side or plastics with a variety of methods, from the inexpensive and temporary (e.g., clear packing tape) to readily available manufactured solutions, such as clear protective sheeting or padding. Even a single ride can buff the shine off your gloss coat. Take the time to protect your bike now!

## 3-POINT, EASY ON/OFF MOUNTING

After pre-fitting your Siskiyou Panniers and installing all protective parts (Hot Springs Heat Shield and clear vinyl film), you're ready to strap on your bags using Giant Loop's 3-point mounting system. The Siskiyou Panniers are designed to securely attach to most stock motorcycles equipped with both passenger footrest brackets and a rear rack and/or passenger grab bars. You are responsible for ensuring these connections and components are correctly installed and that all existing hardware meet or exceed factory specifications.

The Siskiyou Panniers mount with a 3-point webbing and hook-and-loop connection system: Attach the rear and two sides, and you're ready to ride.



**1** Center rear of bag on rear of seat or partially off back of seat (e.g., on a platform rack). Connect rear of Panniers with a hook-and-loop strap affixed to a center of rear rack. Or, use 2 side positions to connect to right and left passenger grab bars, tail rack, etc. Some machines will have multiple attachment points — use all three if you can. Cut hook-and-loop straps only after determining the exact length needed to reach mounting points. **OVERLAP HOOK-AND-LOOP STRAPS A MINIMUM OF 3 INCHES OR MORE.**



**2** Loop lower left webbing strap around or through the left passenger footrest bracket. NOT THE FOOTREST — the mount or bracket. Thread webbing through thumb-lock buckle and snug down firmly.



**3** Loop lower right strap around or through the right passenger footrest bracket. AGAIN, NOT THE FOOTREST — the mount or bracket. Thread webbing through thumb-lock buckle and snug down firmly.

**4** Re-tighten all straps, keeping the bag centered on the machine and in the desired position. Remember, tension between the 3 points (or more!) is what keeps the Panniers stable. **DO NOT RIDE WITH LOOSE STRAPS.**

**5 ALWAYS CHECK ALL CONNECTIONS AND SECURE STRAP ENDS IN ELASTIC BANDS BEFORE EACH RIDE. Every time you stop, re-check all connections and strap ends.**



**6** For maximum stability, use webbing daisy chains on the wheel side of Panniers to attach to luggage racks or other additional mount points.