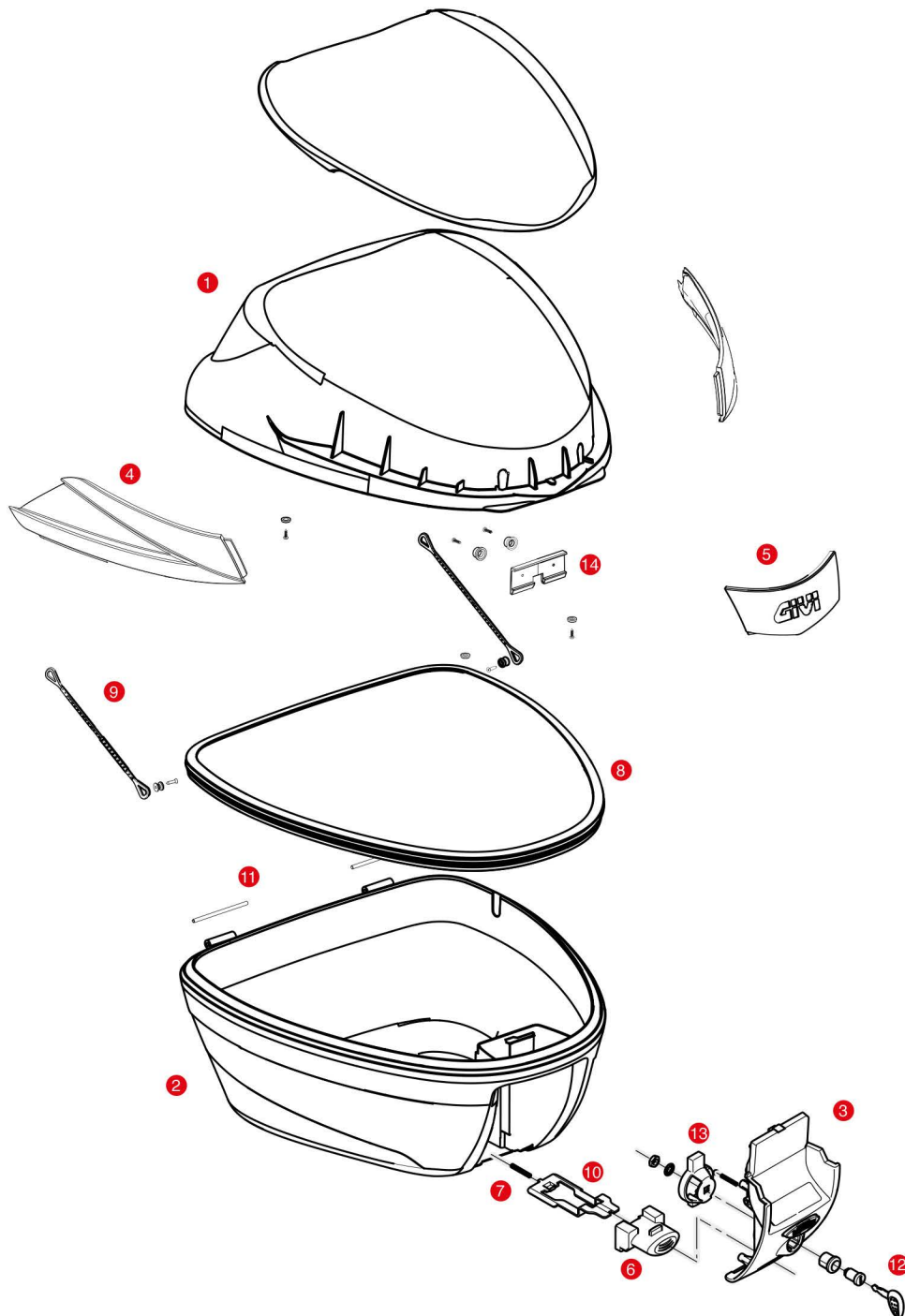


B34NMAL / B34NTMAL



1	Z3400CNM	B34NMAL assembled Top Shell Black
1	Z3400CNTM	B34NTMAL assembled Top Shell
2	Z3400FNM	B34NMAL assembled bottom shell, black
2	Z3400FNTM	B34NTMAL assembled bottom shell
3	Z2751NM	Lock set
3	Z2751NTM	Lock set for Tech version
4	Z3402R	Red reflectors (for B34NMAL)
4	Z3402FR	Smoked reflectors (for B34NTMAL)
5	Z3403R	Central plate
6	Z645R	Push button red
6	Z645CR	Opening push button chromed

7	Z191R	Push button spring, 1 pcs.
8	Z3411R	Trim
9	Z115R	Stop bag opening yarn, 2 pcs.
10	Z761NR	Bolt, 1 pcs.
11	Z590R	Pin. Medium, 2 pcs.
12	Z140R	Key locks with corresponding bush with red handle
12	Z661A	Key locks with corresponding bush with silver handle
13	Z3006R	Plate below lock, for standard key
14	Z4512R	Plate below lock for Security Lock key
15	Z3405R	Top-shell coupling tooth, complete